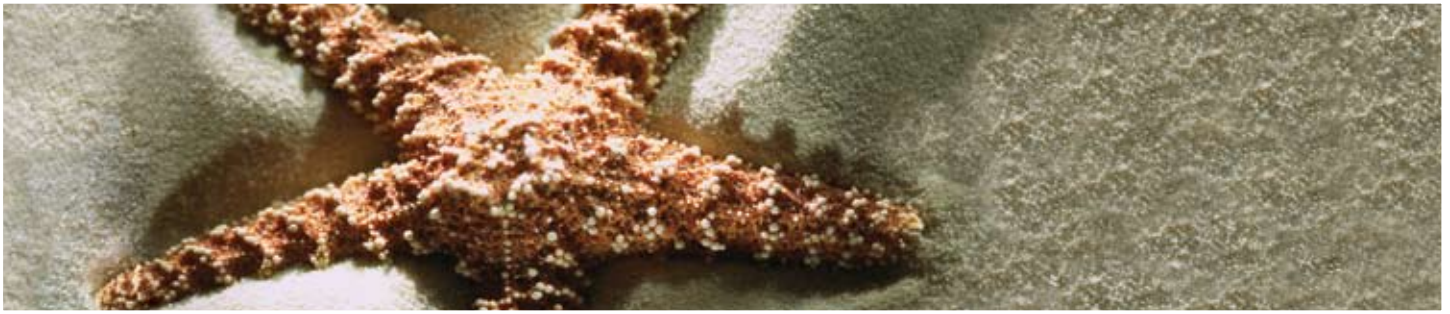


BIOHORIZONS[®]
regeneration



Regeneration
Product Catalog
2007

ORDERING & WARRANTY INFORMATION

Product Support Specialist: _____

Cell phone: _____

Fax: _____

BioHorizons USA	Customer Care/Servicio al Cliente:	888-246-8338 / 205-967-7880
BioHorizons Canada	Customer Care/Service à la Clientèle:	866-468-8338 / 905-944-1700
BioHorizons Ibérica	Atención al Cliente:	+34 91 713 10 84
BioHorizons UK	Customer Care:	+44 8700 620 550
BioHorizons GmbH	Kunden Service:	+49 7661-909989-0
BioHorizons Australia	Customer Service:	+61 2 8399 1520
BioHorizons Mexico	Servicio al Cliente:	+52 55 5545 1297
BioHorizons Chile	Atención al Cliente:	+56 2 475 7230

BioHorizons No Exceptions Lifetime Warranty on Implants and Prosthetics:

BioHorizons implants and prosthetic components carry a Lifetime Warranty. We will replace any BioHorizons implant or prosthetic component if removal of that product due to failure (excluding normal wear to overdenture attachments) is required for any reason, at any time.

Warranties on Instruments, Surgical Drills, Taps and Torque Wrenches:

BioHorizons warranties instruments, surgical drills and taps and torque wrenches for the period specified for each in (1) & (2) below. During the specified warranty period we will replace or repair any product with a defect in material or workmanship.

(1) Instruments: The warranty on BioHorizons instruments extends for a period of one (1) year from the date of initial invoice. This includes drivers, sinus lift components, implant site dilators and other BioHorizons tools used in the placement or restoration of our implants, with the exception of surgical drills and taps (see below). Torque wrenches require recalibration every 12 months. BioHorizons Customer Care can provide information on where to send your wrenches for recalibration and service.

(2) Surgical Drills and Taps: Surgical drills and taps are covered by warranty for a period of 90 days from the date of initial invoice. Surgical drills and taps should be replaced when they are worn, dull, corroded or in any way compromised. BioHorizons recommends the replacement of drills after 12 to 20 osteotomies.¹

Return Policy:

Instructions for initiating returns can be found on the reverse side of the invoice that was shipped with the product. Please contact Customer Care if you need a copy of the instructions or if you have additional questions or requests.

BioHorizons strongly recommends completion of postgraduate dental implant education and strict adherence to the instructions for use (IFU) that accompany our products. Treatment planning and use of the products are solely your responsibility. BioHorizons is not responsible for incidental or consequential damages or liability relating to use of our products alone or in combination with other products, other than replacement or repair under our warranties. BioHorizons continually strives to improve its products and therefore reserves the right to improve, modify, change specifications or discontinue products at any time.

1 - 8 8 8 - 2 4 6 - 8 3 3 8

TABLE OF CONTENTS

AlloDerm[®] Page

AlloDerm	3
AlloDerm GBR	3

GRAFTON DBM[®] and MinerOss[®]

GRAFTON DBM	4
MinerOss	4

Instruments

Dr. Edward P. Allen Surgery Kits	5
Hu-Friedy Instruments	6-10
Additional Periodontal Instruments	17-18
Sinus / Bone Grafting Instruments	19-23
Periotomes	22
Osteotomes	23
Implant Site Dilators	23
Lip & Cheek Retractor	23
Trephines	24

Hu-Friedy Perma Sharp[®] Sutures

Dr. Edward P. Allen's Recommended Sutures	11
Dr. Carl E. Misch's Recommended Sutures	12
Suture Selection Chart	13-14

W&H[®] Motors and Handpieces

Motors, Handpieces, & Accessories	15-16
-----------------------------------	-------

Bone Fixation Screw Kit

Bone Fixation Screw Kit & Accessories	25
---------------------------------------	----

AutoTac[®] System Kit

AutoTac System & Accessories	26
------------------------------	----

AlloDerm®

Regenerative Tissue Matrix

Soft tissue replacement without palatal autograft harvesting

AlloDerm offers a safe alternative to autologous connective tissue for many soft tissue grafting indications. Multiple randomized clinical trials have indicated that there is no statistically recognizable difference between AlloDerm and connective tissue in terms of recession coverage.² Thickness varies from 0.9 to 1.6 mm.

Applications include:

- Root coverage
- Free gingival graft
- Soft tissue ridge augmentation
- Soft tissue augmentation around implants

ALLODERM 1x1

AlloDerm 1 cm x 1 cm

ALLODERM 1x2

AlloDerm 1 cm x 2 cm

ALLODERM 1x4

AlloDerm 1 cm x 4 cm

ALLODERM 2x4

AlloDerm 2 cm x 4 cm

AlloDerm®

Regenerative Tissue Matrix **GBR™**

Graft containment that benefits soft tissue

Unlike other periodontal membranes, AlloDerm GBR remodels into the patient's own tissue. This results in improved bone regeneration and enhanced soft tissue quality and aesthetics.³ The thickness ranges from 0.5 to 0.9mm, providing a material that is easy to handle, yet can be securely sutured or tacked.

Applications include:

- Graft protection and containment
- Flap extender to achieve primary closure

AL-GBR-1x1

AlloDerm GBR 1 cm x 1 cm

AL-GBR-1x2

AlloDerm GBR 1 cm x 2 cm

AL-GBR-1x4

AlloDerm GBR 1 cm x 4 cm

AL-GBR-2x2

AlloDerm GBR 2 cm x 2 cm

AL-GBR-2x4

AlloDerm GBR 2 cm x 4 cm



2 cm x 4 cm



2 cm x 2 cm



1 cm x 4 cm



1 cm x 2 cm



1 cm x 1 cm

AlloDerm and AlloDerm GBR are available in these convenient sizes. Examples are shown to scale.

AlloDerm and AlloDerm GBR are processed by:



AlloDerm and AlloDerm GBR are not available in all countries. AlloDerm and AlloDerm GBR must be shipped overnight.

1 - 8 8 8 - 2 4 6 - 8 3 3 8



GRAFTON DBM is available in multiple forms to give the desired handling characteristics for different clinical indications. It mixes well with MinerOss for composite grafting indications, such as sinus or lateral ridge augmentation, or may be used alone for regeneration of periodontal or other bony defects.

	Matrix Plugs	(3-D network of DBM Fibers)
GR-MTX	8mm x 8mm x 10mm Plugs (box of 5)	
	Putty in a Jar	(DBM Fibers in a glycerol carrier)
GR-PT.5	0.5cc Jar of Putty	
GR-PT1	1.0cc Jar of Putty	
GR-PT2.5	2.5cc Jar of Putty	
GR-PT5	5.0cc Jar of Putty	
	Putty in a Syringe	(DBM Fibers in a glycerol carrier)
GR-SYR.25	0.25cc Syringe of Putty (box of 2)	
	Flex Sheet	(Pressed DBM Fibers)
GR-FL1.5	1.5cm x 1.5cm Sheet	
GR-FL2.5	2.5cm x 5.0cm Sheet	
	Gel in a Syringe	(DBM Particles in a glycerol carrier)
GR-GEL0.5	0.5cc Syringe of Gel	
GR-GEL1	1.0cc Syringe of Gel	
	Paste in a Syringe	(DBM Particles in a starch carrier)
GR-PLUS1	1.0cc Syringe of Plus Paste	
GR-PLUS5	5.0cc Syringe of Plus Paste	



GRAFTON DBM Matrix Plugs



GRAFTON DBM Putty



GRAFTON DBM Flex

MINEROSS[®]

CORTICAL & CANCELLOUS CHIPS

Function Follows Form

MinerOss is a mixture of mineralized cortical and cancellous bone chips. The cortical component provides structural integrity and space-maintaining capability. The cancellous component's porous architecture promotes osteoconduction and rapid revascularization.

MO-C0.5	0.5cc vial
MO-C1.0	1.0cc vial
MO-C2.5	2.5cc vial



GRAFTON DBM and MinerOss are processed by:



GRAFTON DBM and MinerOss are not available in all countries.

DR. EDWARD P. ALLEN SURGERY KITS



Microsurgery has recently been introduced into oral plastic surgery. Among the benefits are refined instruments and materials, which allow for finer, more precise surgical procedures that can result in predictable outcomes. Dr. Edward P. Allen, a recognized expert in periodontal surgery, has designed three new kits that provide instrumentation allowing for minimally invasive surgical techniques:

- The Allen Oral Plastic Surgery Kit
- The Allen Ridge Augmentation / Esthetic Crown Lengthening Kit
- The Allen / Johnston Suture Removal Kit

Designed by Dr. Edward P. Allen, manufactured by Hu-Friedy® and distributed by BioHorizons®

The Allen Oral Plastic Surgery Kit PS

Reference #	Description	Product Attributes and Function
HF-SYRCW	Type CW Aspirating Anesthetic Syringe	Aspirating anesthetic syringe
HF-1013005	5 Scalpel Handle	Round handle allows finger tip control
HF-PCP116	CP-11 Color-coded Probe	3,6,8 and 11mm probe with ergonomic handle
HF-MIR	5 Mouth Mirror, 6 Satin Steel Handle	Mirror with ergonomic handle for cheek and tongue retraction (2 per kit)
HF-SYG7/86	7/8 Younger-Good Curette	Used for root preparation and papilla elevation (2 per kit)
HF-SPM20	Microsurgical Corn Suture Pliers	Allows better visibility of tissue margins for precise suture placement
HF-8-905DD	Precision Dressing Forceps	Small diameter jaw for assistant in capture of needles
HF-NHM5026R	Micro Straight Diamond Dusted Castroviejo Needle Holder	Smaller diameter jaw for 6-0 and 7-0 sutures
HF-S5080	Straight Goldman-Fox Perma Sharp Scissors, 12.5cm/5"	Used for cutting 6-0 and 7-0 sutures
HF-ASPCG3	3 Cogswell Suction Tube	Used for precision suction at surgical site
HF-K01/26	1/2 Orban Periodontal Knife	Used for intrasulcular incisions both facially and interdental
HF-K012KPO3A6	Orban Knife 1/2	Used for sharp dissection in pouch and tunnel procedures
HF-PPAEL	Allen Periosteal Elevator	Used for blunt dissection in pouch and tunnel procedures
HF-PPAELA	Allen Elevator Anterior	Used for blunt dissection in anterior sites
HF-IM4169	Lrg. Sig. Series 16 Inst. Cassette w/ Accessory Area	
HF-ALKIT2	Complete Kit with Cassette	

5

The Allen Ridge Augmentation / Esthetic Crown Lengthening Kit CL

HF-SYRCW	Type CW Aspirating Anesthetic Syringe	Aspirating anesthetic syringe
HF-1013005	5 Scalpel Hdl.	Round handle allows finger tip control
HF-PCP116	CP-11 Color-coded Probe	3,6,8 and 11mm probe with ergonomic handle
HF-MIR	5 Mouth Mirror, 6 Satin Steel Handle	Mirror with ergonomic handle for cheek and tongue retraction (2 per kit)
HF-SYG7/86	7/8 Younger-Good Curette	Used to refine marginal bone in crown lengthening procedures (2 per kit)
HF-SPM20	Microsurgical Corn Suture Pliers	Allows better visibility of tissue margins for precise suture placement
HF-8-905DD	Precision Dressing Forceps	Small diameter jaw for assistance in capture of needles
HF-NHM5026R	Micro Straight Diamond Dusted Castroviejo Needle Holder	Smaller diameter jaw for 6-0 and 7-0 sutures
HF-S5080	Straight Goldman-Fox Perma Sharp Scissors, 12.5cm/5"	Used for cutting 6-0 and 7-0 sutures
HF-ASPCG3	3 Cogswell Suction Tube	Used for precision suction at surgical site
HF-PPBUSER6	Buser Periosteal	Excellent for elevating incised papillae and delicate flaps
HF-PPR3	3 Prichard Periosteal Elevator	Used in osseous surgery for flap retraction (2 per kit)
HF-CO26	2 Ochsenbein SE Chisel	Used to remove marginal bone in crown lengthening procedures
HF-H3	3 Curved Halsted-Mosquito Hemostat, 12cm/4.5"	Used in crown lengthening for frenectomy procedures
HF-IM1002	Hinged Inst. Clip, Sig. Series Cassettes, 6 Pack	Used to securely hold individual instruments
HF-IM4161	Lrg. Sig. Series 16 Inst. Cassette w/ Accessory Area, Gray	
HF-ALKIT3	Complete Kit with Cassette	

The Allen / Johnston Suture Removal Kit SR

HF-EXD66	6/3 Explorer	Provides additional angulation for locating sutures that lie within sulcus
HF-EXD56	5 Explorer	Used to lift suture for cutting prior to removal
HF-NHM-5027	Micro Curved Smooth Castroviejo Needle Holder, 14cm/5.5"	Provides firm grip on 6-0 and 7-0 suture for removal under tension
HF-DPU17	U17 Utility Pick-up Dressing Pliers	Excellent for grasping and lifting knot to cut suture ends, remove sutures
HF-S31	31 Castroviejo Scissors, 10cm/4"	Allows precision cutting of 6-0 and 7-0 sutures in difficult to reach areas
HF-IM5056E2	IMS 10 Instrument Sig. Series Cassette	
HF-AJSRKIT	Complete Kit with Cassette	

HU-FRIEDY INSTRUMENTS

In addition to the Dr. Edward P. Allen Surgery Kits, BioHorizons distributes Hu-Friedy's comprehensive line of specialty instruments and ancillary products. Hu-Friedy's unsurpassed reputation and guarantee behind every product make them the industry leader for instrumentation.



FIRST BECAUSE WE LAST.

- Specialty Surgical Kits
- IMS - *Instrumentation Management System*
- Diagnostic
- Ultrasonic Inserts
- Scaling Instruments
- Oral and Periodontal Surgery
- Microsurgical Instruments
- Perma Sharp Sutures

Please note that the individual instruments will have a symbol next to them identifying in which kit they are found. The Allen Oral Plastic Surgery Kit instruments are indicated by a blue **PS** dot. The Allen Ridge Augmentation / Esthetic Crown Lengthening Kit instruments are indicated by a red **CL** dot. The Allen / Johnston Suture Kit instruments are indicated by an orange **SR** dot.

PS CL



HF-SYRCW

Type CW Aspirating Anesthetic Syringe

Aspirating anesthetic syringe.

PS CL



HF-1013005

5 Scalpel Handle

Round handle allows finger tip control.

PS CL



HF-PCP116

QCP-11 Color-coded Probe

3,6,8 and 11mm probe with ergonomic handle.

PS CL



HF-MIR

5 Mouth Mirror, 6 Satin Steel Handle

Mirror with ergonomic handle for cheek and tongue retraction (2 per kit).

HU-FRIEDY INSTRUMENTS

Please note that the individual instruments will have a symbol next to them identifying in which kit they are found. The Allen Oral Plastic Surgery Kit instruments are indicated by a blue **PS** dot. The Allen Ridge Augmentation / Esthetic Crown Lengthening Kit instruments are indicated by a red **CL** dot. The Allen / Johnston Suture Kit instruments are indicated by an orange **SR** dot.

PS CL



HF-SYG7/86

7/8 Younger-Good Curette

Used for root preparation and papilla elevation (2 per kit).

PS CL



HF-SPM20

Microsurgical Corn Suture Pliers

Allows better visibility of tissue margins for precise suture placement.

PS CL



HF-8-905DD

Precision Dressing Forceps

Small diameter jaw for assistant in capture of needles.

7

PS CL

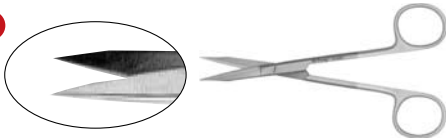


HF-NHM-5026R

Micro Straight Diamond Dusted Castroviejo Needle Holder

Smaller diameter jaw for 6-0 and 7-0 sutures.

PS CL



HF-S5080

Straight Goldman-Fox Perma Sharp Scissors, 12.5cm/5"

Used for cutting 6-0 and 7-0 sutures.

PS CL



HF-ASPCG3

3 Cogswell Suction Tube

Used for precision suction at surgical site.

HU-FRIEDY INSTRUMENTS

Please note that the individual instruments will have a symbol next to them identifying in which kit they are found. The Allen Oral Plastic Surgery Kit instruments are indicated by a blue **PS** dot. The Allen Ridge Augmentation / Esthetic Crown Lengthening Kit instruments are indicated by a red **CL** dot. The Allen / Johnston Suture Kit instruments are indicated by an orange **SR** dot.

PS



HF-KO1/26

1/2 Orban Periodontal Knife

Used for intrasulcular incisions both facially and interdental.

PS



HF-KO12KPO3A6

Orban Knife 1/2

Used for sharp dissection in pouch and tunnel procedures.

PS



HF-PPAEL

Allen Periosteal Elevator

Used for blunt dissection in pouch and tunnel procedures.

PS



HF-PPAELA

Allen Elevator Anterior

Used for blunt dissection in anterior sites.

HU-FRIEDY INSTRUMENTS

Please note that the individual instruments will have a symbol next to them identifying in which kit they are found. The Allen Oral Plastic Surgery Kit instruments are indicated by a blue **PS** dot. The Allen Ridge Augmentation / Esthetic Crown Lengthening Kit instruments are indicated by a red **CL** dot. The Allen / Johnston Suture Kit instruments are indicated by an orange **SR** dot.

CL



HF-PPBUSER6

Buser Periosteal

Excellent for elevating incised papillae and delicate flaps.

CL



HF-PPR3

3 Prichard Periosteal

Used in osseous surgery for flap retraction (2 per kit).

CL



HF-CO26

2 Ochsenbein SE Chisel

Used to remove marginal bone in crown lengthening procedures.

CL



HF-H3

Halsted-Mosquito Curved Hemostat

Used in crown lengthening for frenectomy procedures.

HU-FRIEDY INSTRUMENTS

Please note that the individual instruments will have a symbol next to them identifying in which kit they are found. The Allen Oral Plastic Surgery Kit instruments are indicated by a blue **PS** dot. The Allen Ridge Augmentation / Esthetic Crown Lengthening Kit instruments are indicated by a red **CL** dot. The Allen / Johnston Suture Kit instruments are indicated by an orange **SR** dot.

SR



HF-EXD66

6/3 Explorer

Provides additional angulation for locating sutures that lie within the sulcus.

SR



HF-EXD56

5 Explorer

Used to lift suture for cutting prior to removal.

SR



HF-NHM-5027

Micro Curved Smooth Castroviejo Needle Holder

Provides firm grip on 6-0 and 7-0 suture for removal under tension.

SR



HF-DPU17

U17 Utility Pick-up Dressing Pliers

Excellent for grasping and lifting knot to cut suture ends or remove sutures.

SR



HF-S31

31 Castroviejo Scissors, 10cm/4"

Allows precision cutting of 6-0 and 7-0 sutures in difficult to reach area.

HU-FRIEDY PERMA SHARP SUTURES

Dr. Edward P. Allen's Recommended Sutures

For use in Oral Plastic Surgery and Ridge Augmentation / Crown Lengthening Procedures.



10.7mm
3/8 Circle Premium Reverse Cut

HF-PSN1816C

Perma Sharp Suture

6-0 **Chromic Gut** 18" C-1 Premium Suture.
Finer point geometry for smoother penetration.



10.7mm
3/8 Circle Premium Reverse Cut

HF-PSN8697P

Perma Sharp Suture

6-0 **Polypropylene** 18" C-1 Premium Suture.
Finer point geometry for smoother penetration.



10.7mm
3/8 Circle Premium Reverse Cut

HF-PSN8696P

Perma Sharp Suture

7-0 **Polypropylene** 18" C-1 Premium Suture.
This suture is used to secure coronally positioned flap / pouch over the graft.



12mm
3/8 Circle Reverse Cut

HF-PSN8384P

Perma Sharp Suture

6-0 **Polypropylene** 18" C-17 Suture.
Finer point geometry for smoother penetration.

**more Hu-Friedy Sutures on page 11-12*

HU-FRIEDY PERMA SHARP SUTURES

Dr. Carl E. Misch's Recommended Sutures

For use in implant and bone graft related procedures.



23mm
1/2 Circle Reverse Cut

HF-PSN460V

Perma Sharp Suture

3-0 Violet PGA Suture. 27 inch, C-9 needle.
Finer point geometry for smoother penetration.



18.7mm
3/8 Circle Reverse Cut

HF-PSN392V

Perma Sharp Suture

4-0 Violet PGA Suture. 18 inch, C-6 needle.
Finer point geometry for smoother penetration.

**more Hu-Friedy Sutures on page 11-12*

HU-FRIEDY PERMA SHARP SUTURES

PERMA SHARP[®]

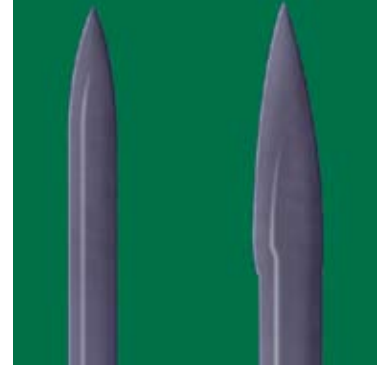
S U T U R E S

Designed exclusively for the Dental Surgeon!

Specifically designed for dental surgery, these sutures are made to perform in all dental surgical applications. Unique features allow less tissue pulling and tearing in thin and delicate areas. Please call or ask your BioHorizons Representative for current suture pricing, and ask about the **Hu-Save Volume Savings Program**. This convenient program can save you both time and money.



Perma Sharp Sutures from Hu-Friedy are made with 300 Series Stainless Steel, the ideal alloy for suture needles. Perma Sharp Sutures have a fine point geometry for smoother penetration and less tissue disruption.



Perma Sharp Suture Needle From Hu-Friedy magnified 35x

Leading Competitive Suture Needle magnified 35x

13

How to Use this Cross-reference Chart

1. Find the needle you are currently using from the last four columns.
2. Go to the first column to find the corresponding Hu-Friedy needle.
3. Locate the Hu-Friedy needle on page 8, then follow along the line to locate the correct suture.
4. Determine the suture size and material you require and locate the part code in the colored box.

Hu-Friedy Perma Sharp Cross Reference Chart

HU-FRIEDY NEEDLE	ETHICON NEEDLE	DAVIS & GECK/ USSC NEEDLE	PROMED SULLIVAN PATTERSON NEEDLE	LOOK HAVEL SCHEIN NEEDLE
C-1	P-1	PRE-1	DSS-10	C-1
C-3	P-3	PRE-2	DSS-12	C-3
C-6	FS-2, PS-2	CE-4, PRE-4	DS-18, DSS-18	C-6, PC-31
C-7	FS-1, PS-1	CE-6, PRE-6	DS-24, DS-26, DSS-2	C-7, PC-33
C-9	X-1	C-30, HS-24		C-9, C-31
C-17	C-3	CE-2	DS-12	C-17, C-16
C-19	J-1			C-19
C-22	FS-3, PS-3	CE-3, PRE-3	DS-16, DSS-14	C-22, PC-34
C-43	X-8		HS-16	C-43, C-26
D-14	V-5	DT-31, CV-332	HRT-17	D-14, Y-5
T-4	SH-1	T-16		
T-28	RB-1	T-31, CV-331		

1 - 8 8 8 - 2 4 6 - 8 3 3 8

HU-FRIEDY PERMA SHARP SUTURES

Needle	Suture Size	Non-Absorbable				Absorbable			
		Silk, black braided	Polyester, green braided	Polypropylene	Black Monofilament Nylon	PGA-Violet*	PGA-Undyed*	Gut, Chromic**	Gut, Plain***
C-1 10.7mm 3/8 Circle Premium Reverse Cut	3-0								
	4-0								
	5-0								
	6-0			PSN8697P				PSN1816C	PSN774A
	7-0			PSN8696P					
C-3 13mm 3/8 Circle Premium Reverse Cut	3-0								
	4-0	PSN641S					PSN494V	PSN1654C	PSN1644A
	5-0	PSN640S		PSN8698P			PSN493V	PSN687C	PSN686A
	6-0			PSN8695P					
	7-0								
C-6 18.7mm 3/8 Circle Reverse Cut	3-0	PSN7772S	PSNR7772L			PSN393V		PSN636C ¹	PSNH822A ¹
	4-0	PSN683S	PSNR683L	PSN8683P	PSN662N	PSN392V ¹	PSN422V ¹	PSN635C ¹	PSN7771A ²
	5-0	PSN682S		PSN8661P			PSN421V ¹	PSN634C ¹	PSNH820A ¹
	6-0								
	7-0								
C-7 24.3mm 3/8 Circle Reverse Cut	3-0	PSN684S							PSNH810A ¹
	4-0								
	5-0								
	6-0								
	7-0								
C-9 23mm 1/2 Circle Reverse Cut	2-0								
	3-0	PSN632S				PSN460V			PSN612A
	4-0								
	5-0								
	6-0								
C-17 12mm 3/8 Circle Reverse Cut	3-0								
	4-0	PSN736S					PSN386V	PSN386C	
	5-0							PSN385C	
	6-0								
	7-0								
C-19 18.3mm 1/2 Circle Reverse Cut	3-0								
	4-0	PSN734S							
	5-0								
	6-0								
	7-0								
C-22 16.2mm 3/8 Circle Reverse Cut	3-0								
	4-0								
	5-0	PSN1628S		PSN8614P		PSN388V			
	6-0	PSN681S		PSN8660P		PSN387V			
	7-0								
C-43 16.2mm 1/2 Circle Reverse Cut	3-0	PSN7762S							
	4-0	PSN7763S							
	5-0								
	6-0								
	7-0								
D-14 17.5mm 1/2 Circle Cutting End Taper	3-0	PSN953S ¹							
	4-0	PSN952S ¹							
	5-0		PSN7773L						
	6-0								
	7-0								
T-4 22.2mm 1/2 Circle Taper Point	2-0								
	3-0	PSN7343S ¹							
	4-0								
	5-0								
	6-0								
T-28 17.5mm 1/2 Circle Taper Point	3-0	PSN872S ¹							
	4-0	PSN871S				PSN304V			
	5-0	PSN870S							
	6-0								
	7-0								

Sutures are 18" in length unless otherwise noted

¹Also available in 27" length.(PSN397V)
²Also available in 27" length.(PSNH821A)

*PGA loses strength in 14-17 days and is absorbed in 90-120 days

**Chromic Gut loses strength in 10-14 days and is absorbed in 60-90 days

***Plain Gut loses strength in 5-7 days and is absorbed in 30-60 days

MOTORS

W&H ImplantMed 915

The ImplantMed 915 is designed for use in dental implantology and provides the surgeon with a high quality power unit that is easy and safe to operate. Maximum motor speed is 40,000 rpm. The motor comes with the WI-75MB 20:1 handpiece, testing gauge, spray cap, irrigation spike and service oil. It also has factory-programmed settings for endodontic functions when used with the W&H Endo Contra-angle 2:1 Handpiece (sold separately below, ref. # WD-79M).



WH-915

W&H ImplantMed 915 Starter Kit

Re-order items:

**WH-ITC915
WH-IC
WH-915MC
WD-79M**

**WH-915 One-piece Disposable Irrigation Set (6 pack)
Irrigation Clip for WI-75MB Handpiece
ImplantMed 915 Motor Cable - 1.8 meter
W&H Endo Contra-Angle 2:1 Handpiece WD-79**
Sold separately. 2:1 speed-reducing ratio. Used with ImplantMed 915 for mechanical root canal preparation.

W&H ElcoMed SA-200

The ElcoMed SA-200 combines power, performance and intelligence to support the surgeon in maxillofacial surgery, implantology, microsurgery and small bone surgery. Maximum motor speed is 50,000 rpm. The SA-200 also permits the storage of torque characteristics of a treatment stage, which can then be saved on a DOC card for archiving purposes. The kit includes the WS-75 20:1 handpiece, testing gauge, spray cap, irrigation spike and service oil.



WH-200

W&H ElcoMed SA-200 Professional Kit

Re-order items:

**WH-200PTWC
WH-200RPT (3 PK)
WH-200INI
WH-200DOC
WH-200MC**

**Pump Tube (190mm) with Connectors
Replacement Pump Tubes (190mm) (3 pack)
INI Cards (3 pack)
DOC Cards (3 pack)
ElcoMed 200 Motor Cable -1.8 meter**

Universal and Legacy Re-order Items

Ref. Code	Description	Motor Compatibility
WH-ST (10 PK)	Green Single-Use Spray Tubes (10 pack)	All W&H Motors
WH-CLP (10 PK)	Set of Spray Tube Clamps (10 pack)	ElcoMed 100 & 200
WH-100PTWC	Pump Tube with Connectors (65mm)	ElcoMed 100
WH-100RPT (5 PK)	Replacement Pump Tubes (65mm) (5 pack)	ElcoMed 100
WH-100MC	ElcoMed 100 Motor Cable -1.8 meter	ElcoMed 100
WH-110MC	ImplantMed 110 Motor Cable -1.8 meter	ImplantMed 110
WH-110CLP (5 PK)	Set of Spray Tube Clamps (5 pack)	ImplantMed 110 & 915
WH-110PTWC	Pump Tube (85mm) with Connectors	ImplantMed 110 & 915
WH-110RPT (3 PK)	Replacement Pump Tubes (85mm) (3 pack)	ImplantMed 110 & 915
WH-110ISAWRC	Irrigation Spike Assembly with Roller Clamp	ImplantMed 110 & 915
WH-110RC	Flow Regulating Roller Clamp	ImplantMed 110 & 915
WH-ISA	Irrigation Spike Assembly (autoclavable)	All W&H Motors
WH-ITWOS	Irrigation Tubing w/o Spike (autoclavable)	All W&H Motors
WH-MD400	MD-400 Service Oil-F1	All W&H Motors
WH-OSC	Oil Spray Cap	All W&H Motors
WH-SP	Sterilization Plug for Motor Cable	All W&H Motors



IMPORTANT NOTE: W&H motors and handpieces are distinguished by their precision craftsmanship and reliability and are covered by a 1-year manufacturer's warranty. Instructions for required cleaning and maintenance are outlined in each product's user manual, and adherence to these procedures is essential for proper function and longevity of the products. BioHorizons assumes no liability for the failure of, or damage to, motors and handpieces that are not properly maintained or used contrary to the instructions for use.

Please contact your product support specialist or Customer Care at 888-246-8338 (866-468-8338 in Canada) if you need additional information.

W&H ElcoMed Surgical Handpieces

W&H has designed a series of straight and contra-angle handpieces for maxillofacial surgery, implantology and microsurgery.



WI-75MB

W&H 20:1 Contra-Angle Handpiece WI-75MB

Contra-Angle Handpiece with speed reduction ratio of 20:1 (2,000 rpm maximum with ImplantMed 915). Equipped for both internal cooling & external cooling. Push-button bur release. Monoblock construction. External Spray Clip (WH-IC) detaches for easy cleaning.



WS-75

W&H 20:1 Contra-Angle Handpiece WS-75

Contra-Angle Handpiece with speed reduction ratio of 20:1 (2,500 rpm maximum). Equipped for both internal cooling & external cooling. Push-button bur release. Trapezoidal profile. Safe grip, particularly with gloves.



WS-92

W&H 1:2.7 Contra-Angle Speed Increasing Handpiece

1:2.7 speed-increasing ratio - 135,000 rpm maximum. Contra-Angle Handpiece suitable for high speed preparation and tissue augmentation procedures. External irrigation port. Uses friction-grip burs (Ø1.6mm).



S-11

W&H 1:1 Straight Surgical Handpiece

1:1 ratio - 50,000 rpm maximum. Suitable for bone harvesting, third molar extractions and osteoplasty. Easily dismantled for cleaning. Uses 45mm friction-grip surgical burs (Ø2.35mm).



S-12

W&H 1:2 Contra-Angle Surgical Handpiece

1:2 speed increasing ratio - 80,000 rpm maximum. Suitable for surgical procedures such as bone smoothing, third molar extractions and osteotomy site drilling. High precision bearings ensure that the unit runs vibration free. Uses friction-grip surgical burs at least 65mm long (Ø2.35mm).

Hex Driver for Latch-Type Reduction Handpieces

For installation and removal of Cover Caps, Healing Abutments, Abutments and Abutment Screws. Use with latch-type contra-angle handpieces: WS-75 or WI-75MB, or similar.



134-350

.050" (1.25mm) Handpiece Hex Driver

Bur Testing Gauge

Used to verify the condition of latch-type burs. Burs in proper condition will fit into larger diameter hole, but will not fit into the smaller hole (marked red). Burs that fail either of these criteria are unfit for use, and may cause damage to the handpiece if used.



WH-BTG

Bur Testing Gauge

PERIODONTAL INSTRUMENTS



HF-TP43

Adson Brown Tissue Pliers

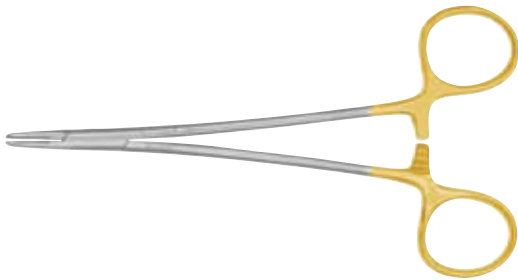
Used to grasp tissue flaps during grafting procedures.
7 x 7 Teeth.



HF-SP20

#20 Corn Suture Pliers

Corn suture pliers can be used to gently grasp the graft during harvesting and placement. The broad, flat-tip design minimizes trauma and prevents tissue damage.



HF-NH5038

Crile Wood Perma Sharp Needle Holder

Provides controlled grip pressure and smooth grip release.



HF-S18SC

Iris Curved Supercut Scissor

Supercut scissors are ideal for gripping tissue and cutting interproximally.



HF-S17SC

Iris Straight Supercut Scissor

Supercut scissors are ideal for gripping tissue and cutting interproximally.



HF-1013003

#3 Scalpel Handle

Flat, Bard Parker style with metric ruler.

PERIODONTAL INSTRUMENTS



HF-PBQ6

Benque Periosteal Elevator

A thin periosteal elevator used to assist suturing during grafting. Allows you to place a separation between the flap and the graft. The suture stops at the instrument without penetrating the graft.



HF-CM2/4

2/4 Molt Curette

For curettage, periosteal reflection, cyst removal and debridement of tooth socket.



HF-PMPI

Membrane Placement Instrument

Combination of pointed and curved narrow placement design is ideal for use with periodontal membranes. The pointed end allows for membrane manipulation. The curved end is used for membrane positioning in and around flaps.



HF-PP5504

Misch Periosteal Elevator, right and left

Ideal for delicate tissue retraction. The spear-shaped end is used to initiate the flap by reflection of the papilla in a sulcular incision.



HF-CM4L

#4 Molt Surgical Curette, Left

For tissue reflection in edentulous areas.



HF-CM4R

#4 Molt Surgical Curette, Right

For tissue reflection in edentulous areas.

SINUS/BONE GRAFTING INSTRUMENTS



HF-SYBG

Bone Grafting Syringe

Introduces graft material into the recipient site. 7mm diameter tube for injecting large amounts of bone material. Curved end facilitates introduction of the graft in difficult to reach areas.



HF-SGRT

Sinus Graft Retractor

Permits easy access and reflection of the mucosal flap along the zygomatic arch to expose the sinus window.



HF-SRM10

Misch Sinus Graft Retractor

Permits easy access and reflection of the mucosal flap along the zygomatic arch to expose the sinus window. 10mm flare.



HF-SRM15

Misch Sinus Graft Retractor

Permits easy access and reflection of the mucosal flap along the zygomatic arch to expose the sinus window. 15mm flare.



HF-MAL1

1 Mead Mallet, Nylon Ends

Used with a chisel to split teeth and/or remove bone.

SINUS/BONE GRAFTING INSTRUMENTS



HF-FRCE

Freer Curved Elevator

Used to harvest bone from the symphysis or ramus for onlay grafts. The angulation of the instrument head and the single bevel edge ensures that the bone is removed safely without damaging the underlying donor site.



OTA200

Osseous Scraper Straight

Collects autogenous bone in an atraumatic manner for use in augmentation procedures. Unique, rotatable blade ensures sharp cutting surface throughout harvest. Recommended for the ramus, symphysis and tuberosity areas. Single-patient use only.



OTA205

Osseous Scraper Angled

Collects autogenous bone in an atraumatic manner for use in augmentation procedures. Unique, rotatable blade ensures sharp cutting surface throughout harvest. Optimized for the external oblique ridge. Single-patient use only.



HF-BMIL

Bone Mill

Hand-held bone mill used to create particulate bone from harvested autogenous bone.



HF-IMPBC

Bone Crusher

Used to reduce particle size of cortical bone grafts. Creates approximately 2mm particle size and provides excellent leverage. Overall length is 10 inches.

SINUS/BONE GRAFTING INSTRUMENTS



HF-BPACK

Bone Packer

Inserted through the sinus window to pack graft material into recipient site. Also used to pack bone for common grafting procedures such as extraction sockets.



HF-RASP

Rasp

Sharp ends used to score the floor of the sinus cavity or host bone to promote osteogenesis through a regional acceleratory phenomenon (RAP) response.



HF-BONT

Bone Tamper

Flat-ended metal punch with a 7mm diameter serrated tip. Used to gently separate the lateral sinus window from the surrounding bone.



HF-RKSN

Short Nose Kerrison Forceps

Low-profile design for widening the sinus opening when the window to the sinus is not large enough for proper membrane elevation. The innovative tip design also collects bone for future grafting.



HF-RBEY

Double Hinged Rongeur

Used for trimming and recontouring alveolar and cortical bone. Also used to harvest bone from donor sites. The double action mechanism permits greater force to be exerted at the tip with minimal force at the handles.

SINUS/BONE GRAFTING INSTRUMENTS



HF-IMP6522

Bone Graft Scoop

Used for mixing and placement of bone graft materials.
Large end of scoop is 10mm x 25mm.
Small end is 5mm x 21mm.



HF-CBBC

Cortical Bone Clamp

The cortical bone clamp with slotted tip permits easy placement of fixation screws through a slot and into a pre-drilled cortical graft. Locks to hold in place.

Sinus Curettes

Short and Long Sinus Curettes used to separate the sinus membrane from the inner wall of the antrum. Curettes should be used in series and slid along the bone, completely 360° around the access window margin. This ensures the release of the membrane without tearing it from the sharp bony access margins.



HF-SINC1

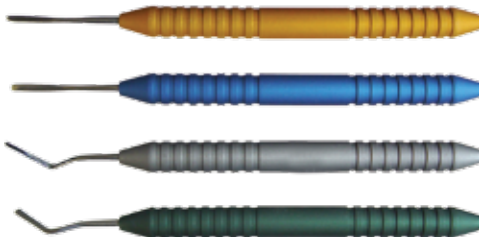
Sinus Curette (short)



HF-SINC2

Sinus Curette (long)

Periotomes



OTA-400 Periotome Set

Available in 4 blade designs to facilitate atraumatic tooth extractions. Typically perform 15-20 extractions before breaking; whereupon they must be discarded and replaced. Purchased as a complete set (OTA-400) or individually (see below).

OTA-401

Periotome Thin (Gold)

OTA-402

Periotome Thick (Blue)

OTA-403

Periotome Angled (Gray)

OTA-404

Periotome Angled (Green)

400-050

Sterilization Tray (not included)

**Call for availability in your country.*

SINUS/BONE GRAFTING INSTRUMENTS

Osteotomes



SI-002	2.0mm
SI-003	3.0mm
SI-003.3	3.3mm
SI-004	4.0mm
SI-005	Set of 4

Offset Osteotomes

Offset geometry provides access into the posterior regions of the mouth. Set of 4 osteotomes includes sterilization tray. Sterilization tray (400-050) is also sold separately.

Implant Site Dilators



SI-SD2	2.0mm
SI-SD2.5	2.5mm
SI-SD3	3.0mm
SI-SD3.4	3.4mm
SI-SD4	4.0mm
SI-SD4.4	4.4mm
SI-SDS	Set of 6

Straight Site Dilators

Site dilators radially compress bone and increase bone density at the implant / bone interface. Set of six dilators includes sterilization tray. Sterilization tray (400-050) is also sold separately.



SI-OSD2	2.0mm
SI-OSD2.5	2.5mm
SI-OSD3	3.0mm
SI-OSD3.4	3.4mm
SI-OSD4	4.0mm
SI-OSD4.4	4.4mm
SI-OSD5.2	5.2mm
SI-ODS	Set of 7

Offset Site Dilators

Offset Site dilators radially compress bone and increase bone density at the implant / bone interface. Provides access to the posterior regions of the mouth. Set of seven dilators includes sterilization tray. Sterilization tray (400-050) is also sold separately.

Implant Surgical Instrumentation



HF-IR

Lip & Cheek Retractor

The anatomically shaped handle permits fatigue-free operation. The angulation of the working end facilitates easier retraction and better viewing of the surgical site over conventional retractors. Great for fully edentulous implant cases.

BONE GRAFTING/TREPHINES

Trephines

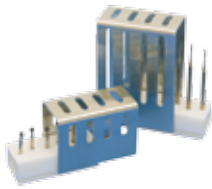
For use in harvesting autogenous bone. Dimensions reflect internal diameter of Trepine. Bur cuts to a maximum depth of 9.8mm. Depth markings are spaced in 2mm increments. Use with latch-type contra-angle handpieces: WS-75 or WI-75MB, or similar. Trephines may be purchased as a set or individually.



HF-TREBS

Trepine Set

Set includes all 6 trephines and autoclavable bur cushion.



HF-IMS1372SH

Bur Cushion

A hollow, rectangular, silicone base with a stainless steel lid that is designed to hold burs in place during cleaning and sterilization.



2mm Trepine
HF-TRE020M



4mm Trepine
HF-TRE040M



6mm Trepine
HF-TRE060M



8mm Trepine
HF-TRE080M



10mm Trepine
HF-TRE100M



12mm Trepine
HF-TRE120M

Bone Grafting Instruments



122-110

2.0mm Lindemann Bone Cutter

Side-cutting drill used to correct angulation and location of osteotomy preparations.

Use with latch-type contra-angle handpieces: WS-75 or WI-75MB, or similar.



122-108

#8 Surgical Bur

Stainless steel bur used for opening a sinus window. 18mm shank, friction-grip (Ø1.6mm).

May be used with WS-92 1:2.7 Speed Increasing Contra-angle handpiece, or similar.

BONE FIXATION SCREW KIT

Indicated for use in fixation of cortical onlay grafts and meshes used in Guided Bone Regeneration. Also indicated for tenting of meshes used in Guided Bone Regeneration.



160-900

Bone Fixation Screw Kit includes:

- 24 Screws
 - (6) 1.4 x 8mm Micro Screws
 - (6) 1.4 x 10mm Micro Screws
 - (6) 2.0 x 10mm Mini Screws
 - (6) 2.0 x 12mm Mini Screws
- Flexible Micro Mesh
- Comprehensive Instrument Set
- Screwdriver Body
- Autoclavable Screw Block with Lid

Bone Fixation Screw Kit Reorder Items



BSV-14X4	1.4mm x 4mm Micro Screw (pack of 6)
BSV-14X6	1.4mm x 6mm Micro Screw (pack of 6)
BSV-14X8	1.4mm x 8mm Micro Screw (pack of 6)
BSV-14X10	1.4mm x 10mm Micro Screw (pack of 6)
BSV-14X12	1.4mm x 12mm Micro Screw (pack of 6)
BSV-2X8	2mm x 8mm Mini Screw (pack of 6)
BSV-2X10	2mm x 10mm Mini Screw (pack of 6)
BSV-2X12	2mm x 12mm Mini Screw (pack of 6)
BSV-2X14	2mm x 14mm Mini Screw (pack of 6)
BSV-MMESH	Micro Mesh for Guided Bone Regeneration <i>25mm x 35mm, 0.1mm thick</i>



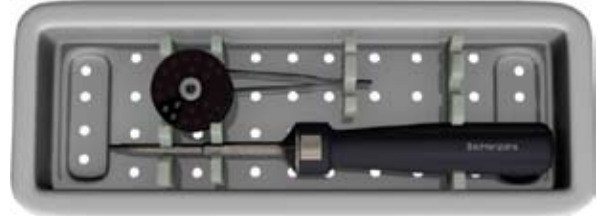
BS-MCSSFT-HND	Micro Screwdriver Shaft for Screwdriver Body
BS-MCSSFT-ANG	Micro Screwdriver Shaft for latch-type handpieces
BS-1MCDB-ANG	1.0mm Micro Drill Bit for latch-type handpieces
BS-MNSSFT-HND	Mini Screwdriver Shaft for Screwdriver Body
BS-MNSSFT-ANG	Mini Screwdriver Shaft for latch-type handpieces
BS-16MMDB-ANG	1.6mm Mini Drill Bit for latch-type handpieces
BS-16X54.8MDB-STR	1.6 x 54.8mm Mini Drill Bit for friction-grip handpieces (Ø2.35mm)
BS-16X67MDB-STR	1.6 x 67mm Mini Drill Bit for friction-grip handpieces (Ø2.35mm)
BS-SDRIVER	Screwdriver Body
BS-SBLOCK	Screw Block

AUTOTAC SYSTEM KIT

The AutoTac titanium tack delivery system is used to secure membranes with the push of a button.

400-270 AutoTac System Starter Kit includes:

- Delivery Handle
- Autoclavable Titanium Tack Cassette (pre-loaded with 21 Titanium Tacks)
- Forceps
- Sterilization Tray with cover



AutoTac System Kit Reorder Items

- 400-248** Autoclavable Tack Cassette (Tacks not included)
- 400-260** Autoclavable Tack Cassette with 21 Titanium Tacks
- 400-240** Refill vial of 5 Titanium Tacks

BioHorizons USA

One Perimeter Park South
Birmingham, AL 35243

Customer Care / Servicio al Cliente:
888-246-8338 or 205-967-7880

BioHorizons Canada

21 Amber Street, Unit # 7
Markham, Ontario L3R 4Z3

Customer Care / Service à la Clientèle:
866-468-8338 or / ou 905-944-1700

BioHorizons Ibérica

Bocángel, 38
28028 Madrid, España

Atención al Cliente:
+34 91 713 10 84

BioHorizons UK

180 Dukes Ride
Crowthorne, Berkshire RG45 6DS

Customer Care:
+44 (0) 8700 620 550

BioHorizons GmbH Germany

Marktplatz 3
79199 Kirchzarten

Kunden Service:
+49 7661-909989-0

BioHorizons Australia

25-33 Allen Street
Waterloo NSW 2012

Customer Service:
+61 2 8399 1520

BioHorizons Mexico

Kelvin 8 Dept. 303
Col. Veronica Anzures
C.P. 11590, Mexico City

Servicio al Cliente:
+52 55 5545 1297

BioHorizons Chile

Juan Esteban Montero 5944
Las Condes
Santiago, Chile

Atención al Cliente:
+56 2 475 7230

References:

1. Chacon GE, Bower DL, Larsen PE, McGlumphy EA, Beck FM. Heat production by 3 implant drill systems after repeated drilling and sterilization. J Oral Maxillofac Surg. 2006 Feb;64(2):265-9.
2. Gapski R, Parks CA, Wang HL. Acellular Dermal Matrix for Mucogingival Surgery: A Meta-Analysis. J Periodontol 2005;76(11):178-186.
3. Novaes AB, Souza SL. Acellular dermal matrix graft as a membrane for guided bone regeneration: A case report. Implant Dent 2001 Sept;10(3):192-195.

BioHorizons products are cleared for sale in the European Union under the EU Medical Device Directive 93/42/EEC. We are proud to be registered to ISO 13485:2003, the international quality management system standard for medical devices, which supports and maintains our product licences with Health Canada and in other markets around the globe.

Not all products are available in all markets. AlloDerm and AlloDerm GBR must be shipped overnight.

© 2007 BioHorizons Implant Systems, Inc. All Rights Reserved. ML0203 REV B JULY 2007

www.biohorizons.com